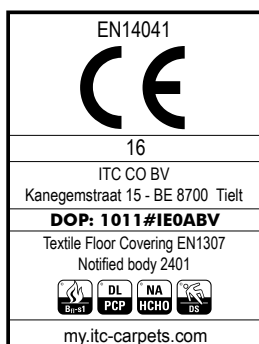


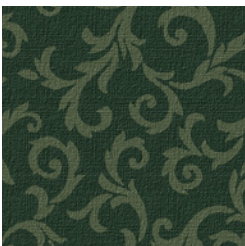
|                          |   |                          |                         |
|--------------------------|---|--------------------------|-------------------------|
| CONSTRUCTION             | Tufting 1/10" saxony                      | STAIR SUITABILITY        | EN 1963                 |
| STRUCTURE                | Tufté 1/10" saxony                        | ESCALIERS                | A: intensive use        |
| STRUKTUR                 | Getuftet 1/10" saxony                     | TREPPENEIGNUNG           |                         |
| STRUCTUUR                | Getuft 1/10" saxony                       | TRAPPENGESCHIKTHEID      |                         |
| PILE MATERIAL            | 100% PA 6 IMPREL®                         | PERMANENTLY ANTISTATIC   | ISO 6356                |
| COMPOSITION DU VELOURS   |   | ANTISTATIQUE PERMANENT   | ≤ 2 kV                  |
| POLMATERIAL              |   | PERMANENT ANTISTATISCH   |                         |
| POOLMATERIAAL            |   | PERMANENT ANTISTATISCH   |                         |
| PRIMARY BACKING          | Non woven PES                             | IMPACT NOISE RATING      | ISO 140-8               |
| SUPPORT                  | Non tissé                                 | ISOLATION PHONIQUE       | 24 dB ΔLw               |
| TRÄGERMATERIAL           | Vlies                                     | TRITTSCHALLVERBESSERUNG  |                         |
| TUFTDOEK                 | Felt                                      | GELUIDSISOLATIE          |                         |
| SECONDARY BACKING        | Action Back                               | SOUND ABSORPTION         | ISO 354                 |
| DOSSIER                  |   | ABSORPTION PHONIQUE      | 0,20 αw                 |
| RÜCKEN                   |   | SCHALLABSORPTIONSGRAD    |                         |
| TAPIJTRUG                |   | GELUIDSABSORPTIE         |                         |
| PILE WEIGHT              | Ca. 900 gr/m <sup>2</sup>                 | THERMAL RESISTANCE       | ISO 8302                |
| POIDS DU VELOURS         |   | RÉSISTANCE THERMIQUE     | 0,08 m <sup>2</sup> K/W |
| POLEINSATZGEWICHT        |   | WÄRMEDURCHLASSWIDERSTAND |                         |
| POOLGEWICHT              |   | WARMTEDOORLAATWEERSTAND  |                         |
| TOTAL WEIGHT             | Ca. 1.875 gr/m <sup>2</sup>               | FASTNESS TO LIGHT        | ISO 105-B02             |
| POIDS TOTAL              |   | SOLIDITÉ A LA LUMIÈRE    | ≥ 5-6                   |
| GESAMTGEWICHT            |   | LICHTECHTHEIT            |                         |
| TOTAAL GEWICHT           |   | LICHTECHTHEID            |                         |
| PILE HEIGHT              | Ca. 4 mm                                  | COLOUR FASTNESS TO WATER | EN ISO 105-E01          |
| EPAISSEUR DU VELOURS     |   | SOLIDITÉ À L'EAU         | ≥ 4-5                   |
| POLHÖHE                  |   | WASSERECHTHEIT           |                         |
| POOLHOOGTE               |   | WATERECHTHEID            |                         |
| TOTAL HEIGHT             | Ca. 7 mm                                  | FIRE RESISTANCE          | EN 13501-1              |
| EPAISSEUR TOTALE         |   | COMPORTEMENT AU FEU      | Bfl-s1 (if glued)       |
| GESAMTHÖHE               |   | BRENNVERHALTEN           |                         |
| TOTALE DIKTE             |   | BRANDGEDRAG              |                         |
| TUFT DENSITY             | Ca. 173.000/m <sup>2</sup>                | RUBBING FASTNESS         | EN ISO 105-X12          |
| NOMBRES DE POINTS        |   | SOLIDITÉ AU FROTTEMENT   | ≥ 4                     |
| NOPPENZAHL               |   | REIBECHTHEIT             |                         |
| AANTAL PUNTEN            |   | WRIJFECHTHEID            |                         |
| PILE DENSITY             | Ca. 0,143 g/cm <sup>3</sup>               | WIDTH                    | EN ISO 3018             |
| DENSITÉ DU VELOURS       |   | LARGEUR                  | ca. 400 cm              |
| POLROHDICHTE             |   | BREITE                   |                         |
| POOLDICHTHEID            |   | BREEDTE                  |                         |
| CLASSIFICATION           | EN 1307                                   |                          |                         |
| CLASSEMENT               | 32 - LC2                                  |                          |                         |
| KLASSIFIKATION           |   |                          |                         |
| CLASSIFICATIE            |   |                          |                         |
| UPEC                     | U3 P3 E1 C0<br>Certification CSTB: 10/276 |                          |                         |
| CASTOR CHAIR SUITABILITY | EN 985                                    |                          |                         |
| CHAISE À ROULETTES       | A: intensive use                          |                          |                         |
| STUHLROLLENEIGNUNG       |   |                          |                         |
| ROLSTOELGESCHIKTHEID     |   |                          |                         |





↔ **94 X** ↕ **94 CM**

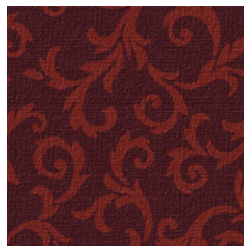
26



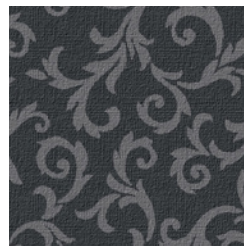
79



16



297



234

