


CONSTRUCTION	Tufting 1/10" loop pile	STAIR SUITABILITY	EN 1963
STRUCTURE	Tufté 1/10" bouclé	ESCALIERS	A: intensive use
STRUKTUR	Getuftet 1/10" Schlinge	TREPPENEIGNUNG	
STRUCTUUR	Getuft 1/10" lussenpool	TRAPPENGESCHIKTHEID	
PILE MATERIAL	100% PA 6 IMPREL®	PERMANENTLY ANTISTATIC	ISO 6356
COMPOSITION DU VELOURS		ANTISTATIQUE PERMANENT	< 2 kV
POLMATERIAL		PERMANENT ANTISTATISCH	
POOLMATERIAAL		PERMANENT ANTISTATISCH	
PRIMARY BACKING	Non Woven PES	IMPACT NOISE RATING	ISO 140-8
SUPPORT	Non tissé PES	ISOLATION PHONIQUE	25 dB ΔLw
TRÄGERMATERIAL	Vlies, PES	TRITTSCHALLVERBESSERUNG	
TUFTDOEK	Vilt, PES	GELUIDSISOLATIE	
SECONDARY BACKING	Action back	SOUND ABSORPTION	ISO 354
DOSSIER		ABSORPTION PHONIQUE	0,15 αw
RÜCKEN		SCHALLABSORPTIONSGRAD	
TAPIJTRUG		GELUIDSABSORPTIE	
PILE WEIGHT	Ca. 640 gr/m ²	THERMAL RESISTANCE	ISO 8302
POIDS DU VELOURS		RÉSISTANCE THERMIQUE	0,07 m ² K/W
POLEINSATZGEWICHT		WÄRMEDURCHLASSWIDERSTAND	
POOLGEWICHT		WARMTEDOORLAATWEERSTAND	
TOTAL WEIGHT	Ca. 1.711 gr/m ²	FASTNESS TO LIGHT	ISO 105-B02
POIDS TOTAL		SOLIDITÉ A LA LUMIÈRE	≥ 5-6
GESAMTGEWICHT		LICHTECHTHEIT	
TOTAAL GEWICHT		LICHTECHTHEID	
PILE HEIGHT	Ca. 3,1 mm	COLOUR FASTNESS TO WATER	EN ISO 105-E01
EPAISSEUR DU VELOURS		SOLIDITÉ À L'EAU	≥ 4-5
POLHÖHE		WASSERECHTHEIT	
POOLHOOGTE		WATERECHTHEID	
TOTAL HEIGHT	Ca. 5,8 mm	FIRE RESISTANCE	EN 13501-1
EPAISSEUR TOTAL		COMPORTEMENT AU FEU	Cfl-s1
GESAMTHÖHE		BRENNVERHALTEN	
TOTALE DIKTE		BRANDGEDRAG	
TUFT DENSITY	Ca. 218.000/m ²	RUBBING FASTNESS	EN ISO 105-X12
NOMBRES DE POINTS		SOLIDITÉ AU FROTTEMENT	≥ 4
NOPPENZAHL		REIBECHTHEIT	
AANTAL PUNTEN		WRIJFECHTHEID	
PILE DENSITY	Ca. 0,118 g/cm ³	WIDTH	EN ISO 3018
DENSITÉ DU VELOURS		LARGEUR	ca. 400 cm
POLROHDICHTE		BREITE	
POOLDICHTHEID		BREEDTE	
CLASSIFICATION	EN 1307	DESIGN REPEAT CM	ca. 199 (W) x
CLASSEMENT	33 - LC1	RACCORD CM	ca. 193 (H)
KLASSIFIKATION		RAPPORT CM	repeatless installation
CLASSIFICATIE		DESSINRAPPORT CM	possible
CASTOR CHAIR SUITABILITY	EN 985		
CHAISE À ROULETTES	A: intensive use		
STUHLROLLENEIGNUNG			
ROLSTOELGESCHIKTHEID			



EN14041




15

ITC CO BV
Kanegemstraat 15 - BE 8700 Tielt

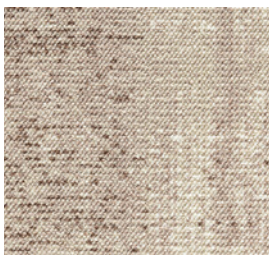
DOP: 1011#IE0ACL

Textile Floor Covering EN1307
Notified body 0493

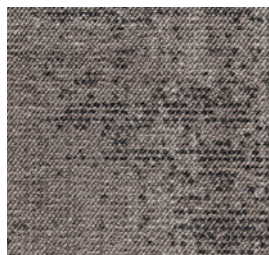


my.itc-carpets.com





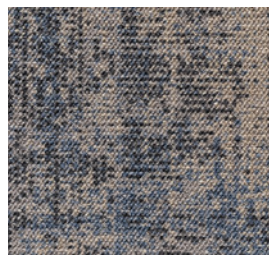
▲ 43



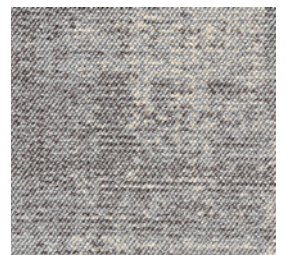
▲ 45



▲ 98



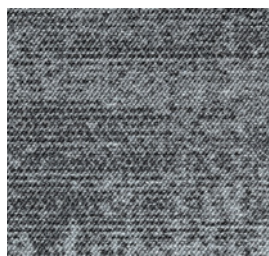
▲ 79



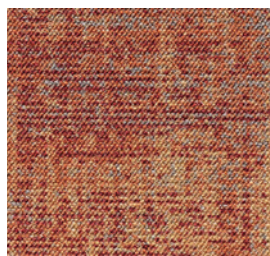
▲ 39



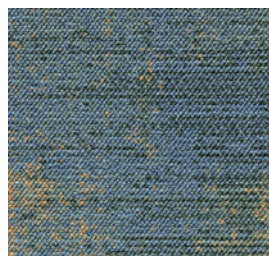
▲ 93



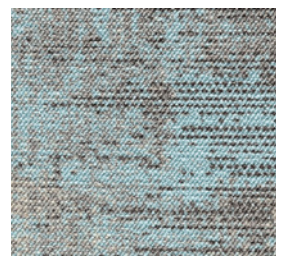
▲ 99



▲ 14



▲ 27



▲ 32